

防洪-結合城鄉與水岸-以虎尾鎮為例

The connecting of the city and water in preventing water hazards in Huwei City

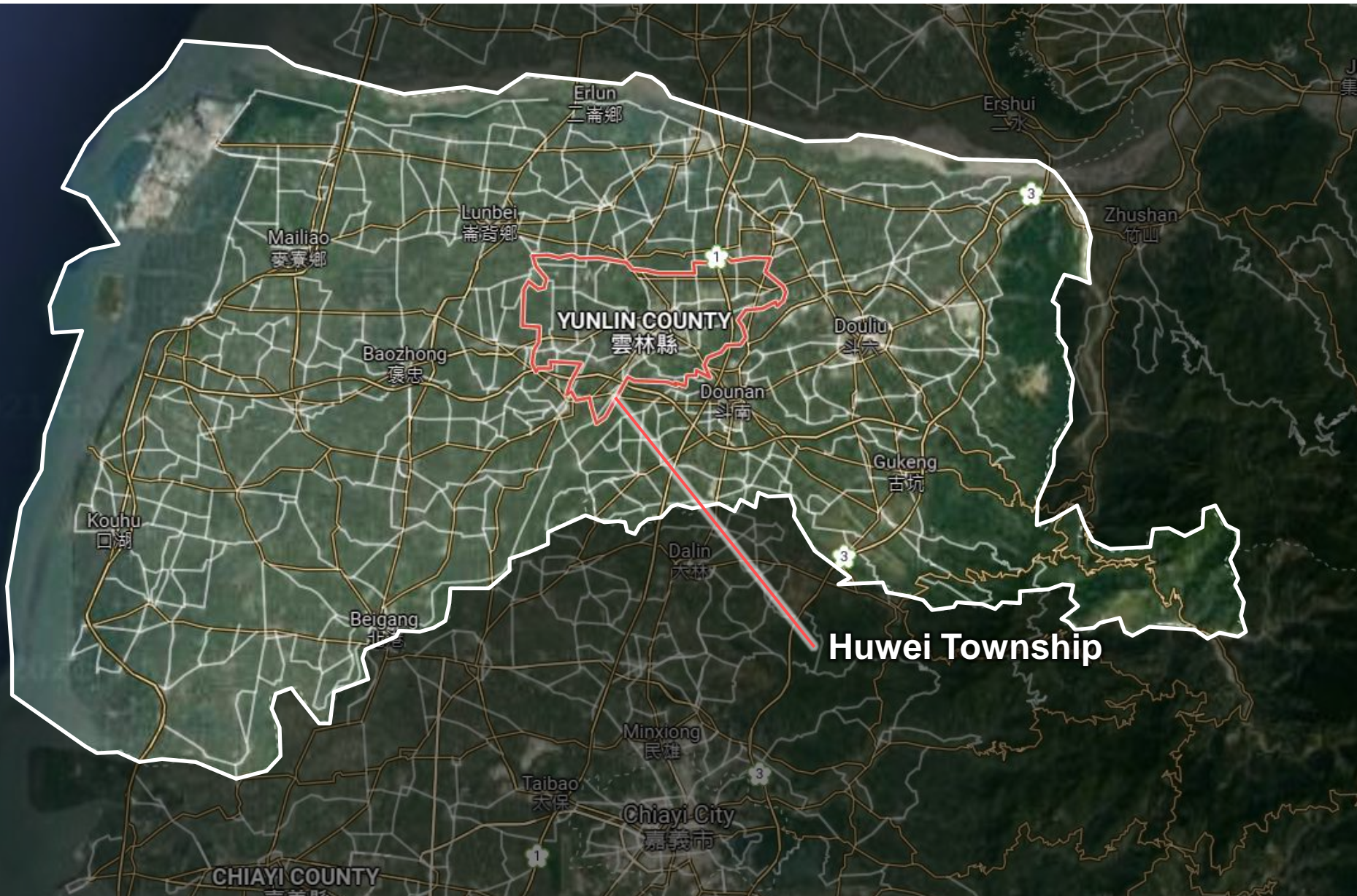


經濟部水利署
Water Resources Agency, MOEA



台灣設計研究院
TAIWAN DESIGN RESEARCH INSTITUTE













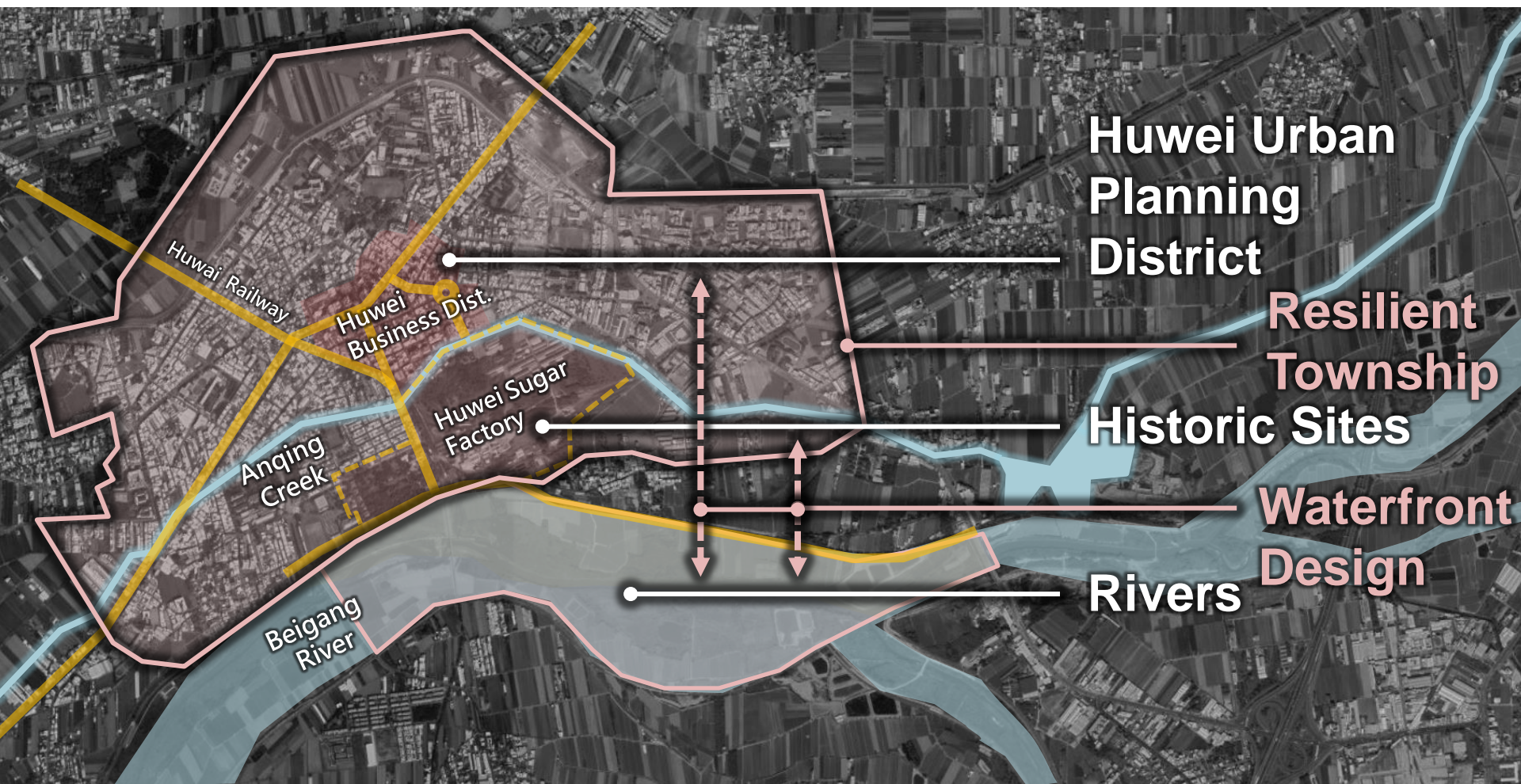














韌性城市

Resilient Cities



**Flood
Detention**



**Living with
water**



**Sustainable
City**





Rotterdam started to work on climate adaptation more than a decade ago. As it is a delta city, we have to deal with the challenges caused by climate change. We developed an approach that helps us not only to tackle these challenges, but also simultaneously work on a better city; to become adaptive and attractive. **This approach called ‘resilience by design’ (the notion of resilience is included in the early stages of design)** goes with actions on the ground, which makes that Rotterdam is becoming a “showroom for innovative urban adaptation”.

Rotterdam Mayor Ahmed Aboutaleb

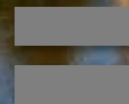
水岸縫合

Waterfront Design

Restore
Nature
環境營造



Local
Teamwork
居民共營



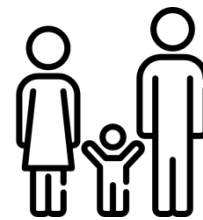
Win-win
創造共贏
觀光人流



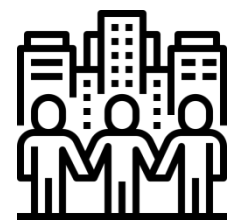
**Reserve
History**



**Restore
Historic River**



**Family
Leisure**



**Regional
Revitalization**



**GOOD DESIGN
AWARD 2020**









虎尾鎮

Huwei Township

Vision and Mission: Establishing a Resilient Role Model in Taiwan

- ✓ Reduce risks of water-related hazards.
- ✓ Establishing a national resilient role model.
- ✓ Combining history, urban planning and culture.
- ✓ Fulfilling the concept of "living with water."





Resilient Design

Establishing a resilient township role model in Huwei, Yunlin.

Waterfront Design

Creating an eco-friendly model through Low-Impact-Development design process.



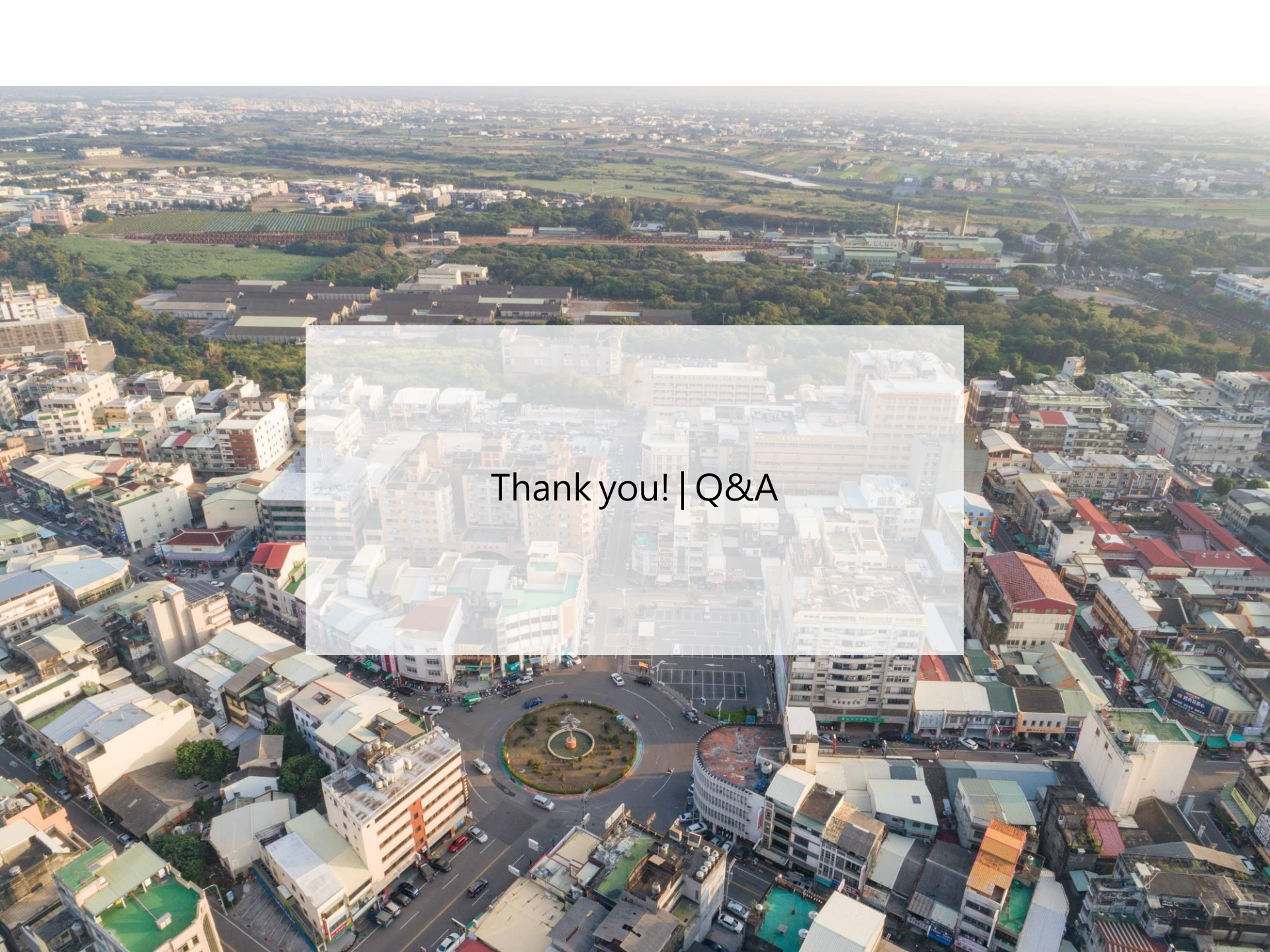
Connecting Cultural Roots

Recalling the industrial history in Huwei by connecting historic sites and waterfront.

Renovating Local Industry

Shaping a hydrophilic tourist environment and revitalizing sugar factories.





Thank you! | Q&A